

Public Document Pack

Ask for Will Stevenson
Email William.Stevenson@lichfielddc.gov.uk



District Council House, Frog Lane
Lichfield, Staffordshire WS136YU

Customer Services 01543 308000

Dear Sir/Madam

OVERVIEW & SCRUTINY COMMITTEE SUPPLEMENT

Please find attached supplement papers for Overview & Scrutiny Committee on **TUESDAY, 14TH NOVEMBER, 2023 at 6.00 PM**

Yours faithfully

A handwritten signature in cursive script that reads 'Kerry Dove'.

Kerry Dove
Chief Operating Officer

SUPPLEMENT

7. Knife Angel

3 - 24

This page is intentionally left blank

Knife Angel Supplemental Information

Report of Councillor Richard Cox, Portfolio holder for community engagement

Date:	14 November 2023
Agenda Item:	
Contact Officer:	Yvonne James, James Johnson, Christie Tims
Tel Number:	01543 308002
Email:	Christie.tims@lichfielddc.gov.uk
Key Decision?	NO
Local Ward Members	N/A



OVERVIEW & SCRUTINY COMMITTEE

1. Supplemental Information

- 1.1 Further to the main report the following information has been requested for review by the committee:
- 1.2 Updated violent crime statistics provided by the PFCC at **Appendix 1**
- 1.3 Copy of the certificate of recognition issued to Clive Knowles (as required by the ‘Knife Angel Agreement of Conscience’) at **Appendix 2**
- 1.4 Details of the recognition certificates to be issued as set out in section 61 to 65 of the ‘Knife Angel Agreement of Conscience, which state:

Civic Launch & Civic Departure

61. Borrower must arrange suitable recognition for The British Ironwork Centre. This must be organised and issued by the Police and Crime Commissioner’s Office, Police Constabulary ,City Council, City Cathedral, your MP and Lord Lieutenants Office and is to be presented at the ‘Civic Launch.’ This is a compulsory requirement, these awards are to be included in a report being compiled for the Home Office. The wording on these certificates should recognize Clive Knowles organising the UK’s largest independent anti-violence educational tour and educational programme against Violence and Aggression and its accompanying educational programme.

62. It is the Borrower’s responsibility to ensure that the Owner is invited to the ‘Civic Launch’ and permitted to formally address the Civic gathering and media. This formal address will allow the Owner to accurately explain THE KNIFE ANGEL’s purpose and how it is trying to bring about national change.

63. The ‘Civic Launch’ will provide the perfect platform for The British Ironwork Centre to offer recognition to key members involved in getting THE KNIFE ANGEL to the Borrower’s location. These award certificates are designed to recognise their efforts in community safety, knife crime awareness and anti-violence. The British Ironwork Centre will need prior warning of the names of those individuals who have shown outstanding effort in order to successfully acknowledge their contribution. These awards are limited to a maximum number of six individuals. If you require any more, we can provide these for you at cost price (no profit).

64. Additionally, it is the Borrower’s responsibility to ensure that all sponsors and notable community members are thanked and awarded for their efforts and support in getting THE KNIFE ANGEL to their location.

65. The Borrower must arrange suitable commendations for Clive Knowles-The British Ironwork Centre. This must be organised and issued by the Police and Crime Commissioner’s Office, Chief Constable, the City and Town Council, Local MP, Lord Lieutenant, High Sheriff and an educational partner, i.e. College or University, to be presented at the ‘Civic Launch.’ This is a compulsory requirement. These awards are to be included in a report being compiled for the Home Office so this must be carried out as the awards

are evidential over the value and positive impact of the Angel's visit. The wording on these certificates should recognise the UK's largest independent anti-violence educational programme—the Knife Angel.

- 1.5 The Lichfield District Community Safety Partnership co-ordinated 30 days of educational workshops and engagement activity in the district. Alison Cope was commissioned to deliver specific sessions to local schools as part of this programme. 1200 students from schools in the district received these sessions and an evaluation report is set out at **Appendix 3** on the impact these sessions had.
- 1.6 Competitions were set up for local children to produce art and poetry around the event.
- 82 pieces of artwork were submitted and 1057 votes were cast for the artwork competition
 - 1,112 people took part in the Knife Crime Education quizzes on site
 - 11 young people were awarded certificates for artwork and 1 young person for poetry
- 1.7 Ongoing legacy issues from the Knife Angel include:
- Planting of the Lichfield Angel Roses on 21 and 22 November in Burntwood and Beacon Park.
 - The Knife Angel Commemorative Plaque has been provided and will be installed at a location in the City Centre to provide a lasting commitment to anti-violence and knife crime.
 - Ongoing work with the Training Initiative and The James Brindley Foundation including a pilot of youth engagement for anti-violence which will be launched in 2024.
 - Ongoing fundraising for bleed kits and training more members of the public and retailers – this year 101 people were trained on their use and 19 kits distributed.
 - Ongoing knife amnesty, with four bins remaining in situ indefinitely

2. Recommendations

2.1 The committee review and comment on the content of the report.

Alternative Options	1 To not review the effectiveness of the Knife Angel visit. This will leave the Community Safety Partnership open to criticism regarding committing resources to the event.
Consultation	1. O&S members have fed in their queries regarding the hosting of the Knife Angel
Financial Implications	1. None from the review. Funding was provided via PFCC and using existing property service budgets (to provide transport, security, lighting, and power etc to site)
Approved by Section 151 Officer	Yes
Legal Implications	1. None from the review
Approved by Monitoring Officer	Yes
Contribution to the Delivery of the Strategic Plan	1. The Community Safety Partnership Annual Action Plan is a statutory requirement that reflects the District Council's Strategic Plan 2020 to 2024 and will be a key feature to support delivery of Lichfield 2050.

Equality, Diversity and Human Rights Implications	1. None, review of the Knife Angel event will not impact individual rights but should raise awareness of the impact and consequences of violent crime.
EIA logged by Equalities Officer	Yes Equalities Officer confirmed not required.
Crime & Safety Issues	1. The campaign was developed to positively impact on our duty to prevent crime and disorder within the district (Section 17 of the Crime and Disorder Act, 1988).
Data assessment	<ol style="list-style-type: none"> 1. Data sets for Knife Crime and ONS have been provided for member review in relevant web links below. 2. SPI data shows that Stowe has the highest incident of crime within the district with 140 incidents per 1000 population against a district average of 50. Social Progress Index Lichfield Tableau Public it does not specify violent or knife crime in the data sets. 3. It will be some years before the impact of the Knife Crime and Anti-Violence campaign can be evidenced from data due to the targeting at such young audiences.
Environmental Impact (including Climate Change and Biodiversity).	1. Frog Lane was chosen due to the accessibility by other modes of transports from across the district and wider afield.
GDPR / Privacy Impact Assessment	1. None

	Risk Description & Risk Owner	Original Score (RYG)	How We Manage It	Current Score (RYG)
A	The Knife Angel event provides no long-term benefit to the district	Yellow (material) or Green (tolerable) as determined by the Likelihood and Impact Assessment.	Base line data from before the visit and assess these measures in future data tracking.	Green (tolerable) as determined by the Likelihood and Impact Assessment.
B				
		Background documents Community safety partnership – Our delivery plan (lichfielddc.gov.uk)		

Relevant web links

[official 'Knife Angel on Tour' page.](#)

[Knife crime statistics - House of Commons Library \(parliament.uk\)](#)

[Crime in England and Wales: Police Force Area data tables - Office for National Statistics \(ons.gov.uk\)](#)

[Alison Cope | Anti-Violence Campaigner](#)

[Activities - SCVYS Staffordshire Council of Voluntary Youth Services \(staffscvys.org.uk\)](#)

[Mark and Beverley Brindley – The James Brindley Foundation](#)

[Home Page - Natalie Q Inspire](#)

Offence Type	2021			2022									2023									Overall Total			
	Oct	Nov	Dec	Jan	Feb	Mar	Apr	May	Jun	Jul	Aug	Sept	Oct	Nov	Dec	Jan	Feb	Mar	Apr	May	Jun		Jul	Aug	Sept
More Serious Violent Crime with Injury	1	2	1	0	2	3	2	1	0	0	4	1	0	1	1	1	0	2	1	1	0	1	3	2	30
Less Serious Violent Crime with Injury	0	1	1	0	1	0	0	2	1	0	1	0	2	1	0	1	2	0	0	0	0	1	1	1	16
Personal Robbery	0	0	1	1	0	0	0	1	1	0	2	1	0	1	0	1	2	0	0	0	1	1	1	0	14
Other Violence against the person	0	0	0	0	0	0	0	0	0	1	1	0	0	0	0	0	0	0	0	0	0	1	0	0	3
Business Robbery	0	0	0	0	0	1	0	0	0	0	0	0	1	0	0	0	0	0	0	0	0	0	0	0	2
Totals	1	3	3	1	3	4	2	4	2	1	8	2	3	3	1	3	4	2	1	1	1	4	5	3	65

This page is intentionally left blank

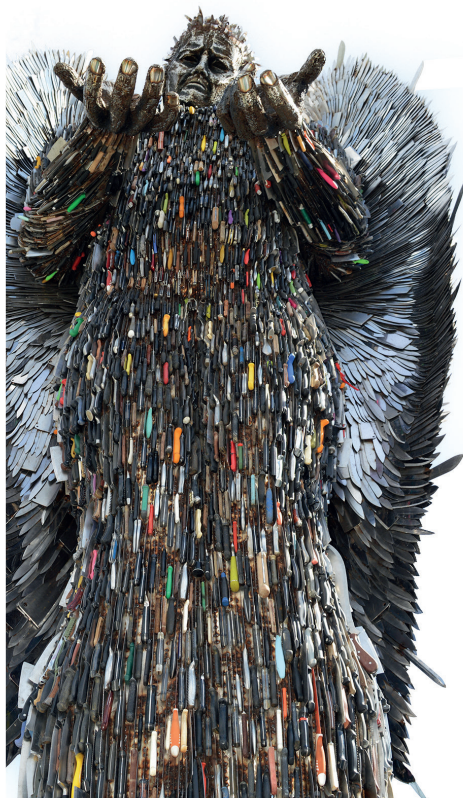
Certificate of Recognition

Cllr Doug Pullen, Leader of Lichfield District Council
and Simon Fletcher, Chief Executive of Lichfield
District Council are proud to present to

Clive Knowles

Chairman of the British Ironworks Centre

In recognition of the creation of the
National Monument against Violence and
Aggression which has assisted with raising
awareness of anti-violence education focusing
on youth violence.



The Knife Angel

on location in Lichfield

July 2023

A handwritten signature in black ink, appearing to read 'DP', positioned above a horizontal line.

Cllr Doug Pullen
Leader of Lichfield
District Council

A handwritten signature in black ink, appearing to read 'SF', positioned above a horizontal line.

Simon Fletcher
Chief Executive of Lichfield
District Council

This page is intentionally left blank

ALISON COPE SESSIONS STAFFORDSHIRE

Evaluation Report August 2023



PSHE Education
STOKE-ON-TRENT & STAFFORDSHIRE

Prepared by: Natalie McGrath
PSHE Co-ordinator
Staffordshire

CONTENTS

3	Introduction & Context
4	Alison Cope
5	PSHE Education
6	Overview of Delivery
7	Feedback from Sessions

INTRODUCTION & CONTEXT

WE USE JOSHUA'S UNIQUE LIFE AND DEATH STORY TO EDUCATE YOUNG PEOPLE OF THE DANGERS OF KNIFE CRIME AND HELP THEM TO MAKE POSITIVE CHOICES TO STAY SAFE

The Joshua Ribera Foundation CIC.

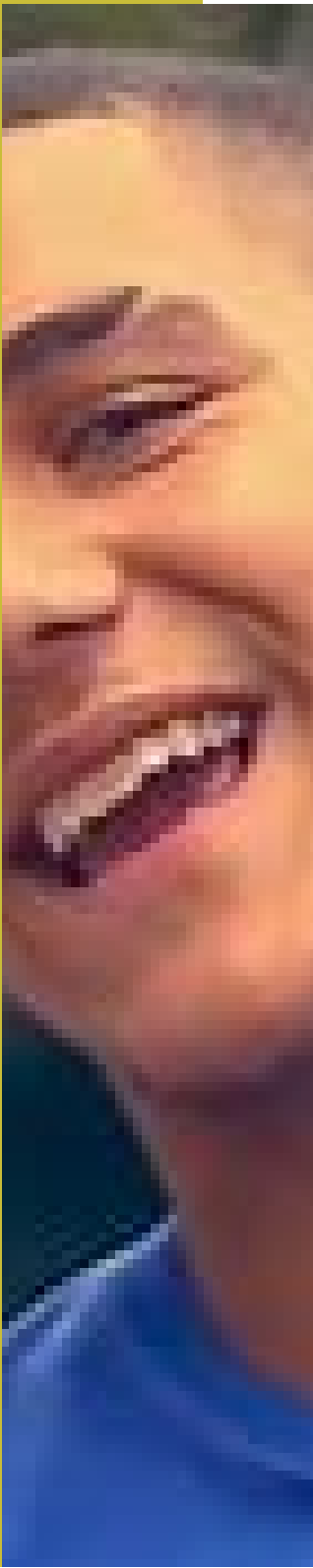
The Community Safety Partnership (CSP) is the statutory body responsible for implementing a strategy to reduce crime, disorder and substance misuse in their local borough/district. Its aim is to work in partnership to increase public confidence and improve community safety.

A number of Community Safety Partnerships (Cannock Chase, Lichfield District and Tamworth) in the County wanted to utilise PSHE education to help educate young people about knife crime and its potential consequences as part of their strategic plans.

Following feedback from Alison Cope's sessions in Stoke-on-Trent and the Violence Reduction Alliance conference, the Community Safety Partnerships stated they wanted to host Alison in their own localities.

They engaged with the PSHE Education Service to ensure best practice guidance was implemented and to maximise the potential learning outcomes for the young people attending the sessions. This included offering education settings a follow-up education session to embed the learning and support the emotional impact of Alison's session.

The purpose of this report is to highlight feedback from the education settings, who engaged with this opportunity.



04

ALISON COPE

Alison Cope lost her son to knife crime in 2013 and now delivers education presentations across the country to share her son's story about his life and his death and the impact this has had on her and others. The intention is to try and stop other families sharing in her experience with their own loved ones.

In the session Alison shares photographs from social media, highlighting how the online world can impact on other people's perceptions of criminal activity, gang association and the shares the powers the Police have when investigating someone. Alison highlights the importance of choice and consequences.

Alison asks the participants "Who do you think I am?", revealing herself to be the mother of a victim of knife Crime. She then uses photographs and videos to bring Joshua's story to life. Telling how one altercation ended the hope, dreams and lives of two young men, one - her son Joshua Ribera. The other, the male in prison for taking Joshua's life following a stabbing - a single wound to the heart. Alison shares that Joshua had turned his life around and was better known as Depzman (although to Alison he will always be Joshua), a up and coming Grime Artist, who had a number one album and was on the brink of stardom.

The attack took place at a memorial party in Birmingham, for another young male who had died through knife crime. The court reports that Armani Mitchell (the person convicted of Joshua's murder) deliberately carried a three-inch hunting knife to the party but recognised that this was not a premeditated attack, but a response to altercations between the two young men that had devastating effects on both.



05

PSHE EDUCATION

The Pan-Staffordshire PSHE Education Service, is funded by Staffordshire Police, Fire & Rescue and Crime Commissioner's Office to support the development and delivery of age-appropriate, quality PSHE education. PSHE education, when done effectively, enables children and young people to develop the knowledge and skills they need to thrive now and in the future. Within Staffordshire the service is delivered by Staffordshire Council of Voluntary Youth Services (SCVYS).

The service has developed a local quality assured framework and best practice principles to ensure they can support commissioners with funding external providers to enhance PSHE provision within schools.

The service was able to provide advice and guidance to the three Community Safety Partnerships on how best to utilise Alison's sessions to ensure that learning was optimised for the young people attending the session and also promoted the opportunity to eligible settings. This included promoting the use of a follow-on education session that is designed to be delivered by in-house trained PSHE educators. The intended learning outcomes for the session were:

- By the end of the session participants will be able to explain the impact of knife crime for individuals (victims and offenders) and the wider community.
- By the end of the session participants will be able to challenge decisions to carry a bladed weapon.
- By the end of the session participants will be able to utilise negotiation skills to de-escalate situations.
- By the end of the session participants will be able to list where to go for further help and support.

This session was written with consideration for the local best practice principles highlighted below.

EFFECTIVE PSHE

-  Is delivered within a safe learning environment based on the principles that prejudice, discrimination and bullying are harmful and unacceptable.
-  Has clear learning objectives and outcomes and ensure sessions and programmes are well planned, resourced and appropriately underpinned by solid research and evidence.
-  Is relevant, accurate and factual, including the use of correct terminology.
-  Is positively inclusive in terms of the protected characteristics.
-  Is designed to include the development of knowledge, skills and values to support positive life choices.
-  Uses positive messaging, that does not cause shame or victim blaming.
-  Challenges attitudes and values within society, such as perceived social norms and those portrayed in the media.
-  Reflects of the age and stage of the children and young people and is tailored to the environment and group.
-  Utilises active skill-based learning techniques that accommodate a range of learning styles.
-  Ensures that children and young people are aware of their rights, including their right to access confidential advice and support services within the boundaries of safeguarding.

OVERVIEW OF SESSIONS

District/Borough	Number of Eligible Settings	Number of Settings Accepting Offer	Number of Sessions Delivered
Cannock Chase	7	6	6
Lichfield	8	6	7
Tamworth	7	5	7

Some settings had already booked Alison to deliver and funded the sessions themselves. This included the PRUs in Cannock Chase and Lichfield District, and a mainstream secondary school in Tamworth.



THE HART SCHOOL
Creative Education



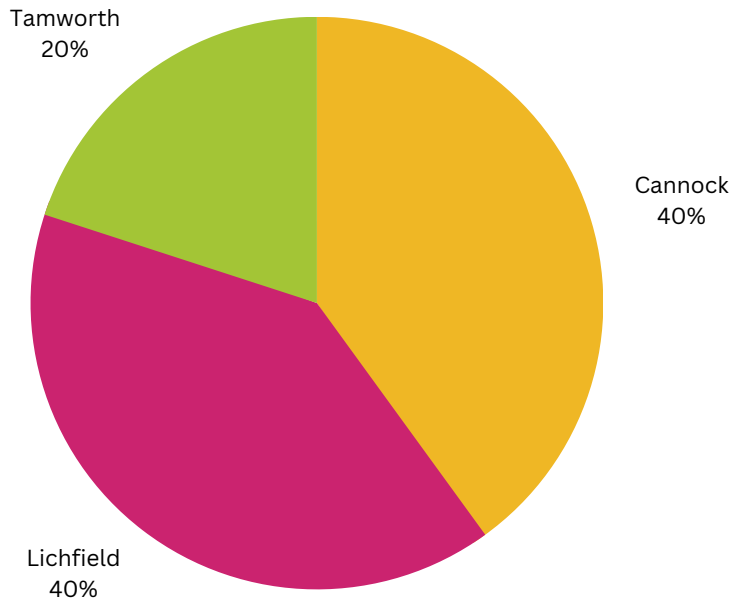
07

FEEDBACK FROM SESSIONS

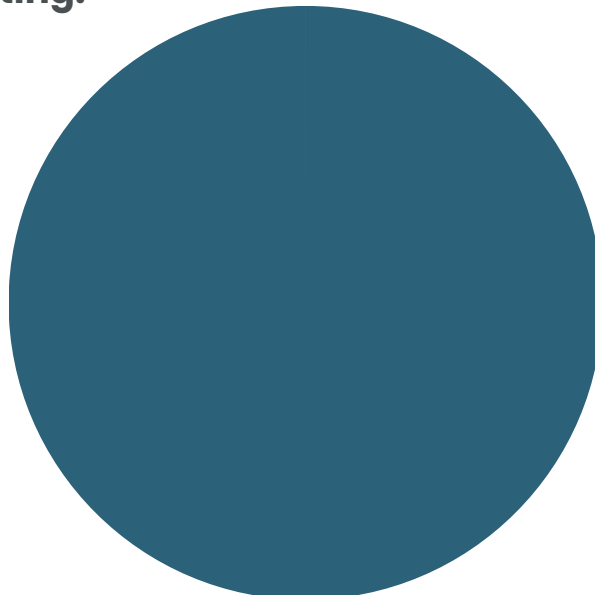
Education settings were invited to provide feedback to the PSHE Education Service on the funded sessions by the various Community Safety Partnerships. This was a voluntary process, and this is reflected in the low response rate. Due to the response rate being so low the data is shown from across the three districts to help future decision-making.

Recommendation: Build evaluation and feedback into the package for education settings to ensure better response rate.

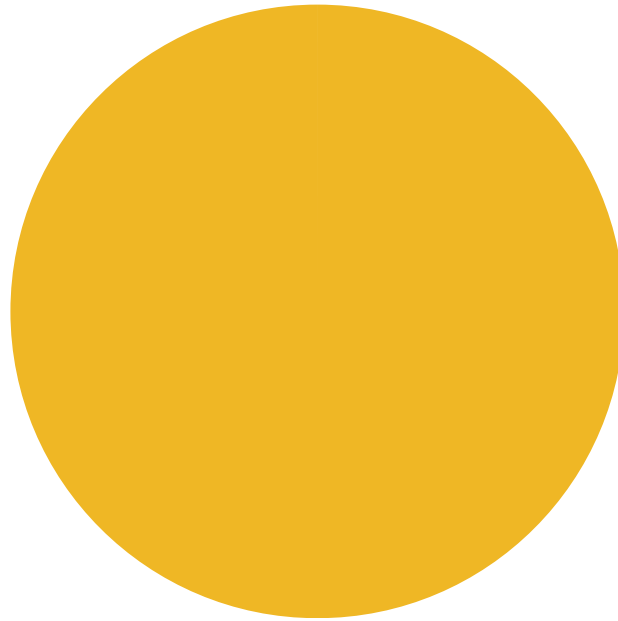
Location of Respondents:



Type of Education Setting:



Overall what did you think of the Alison Cope Session:

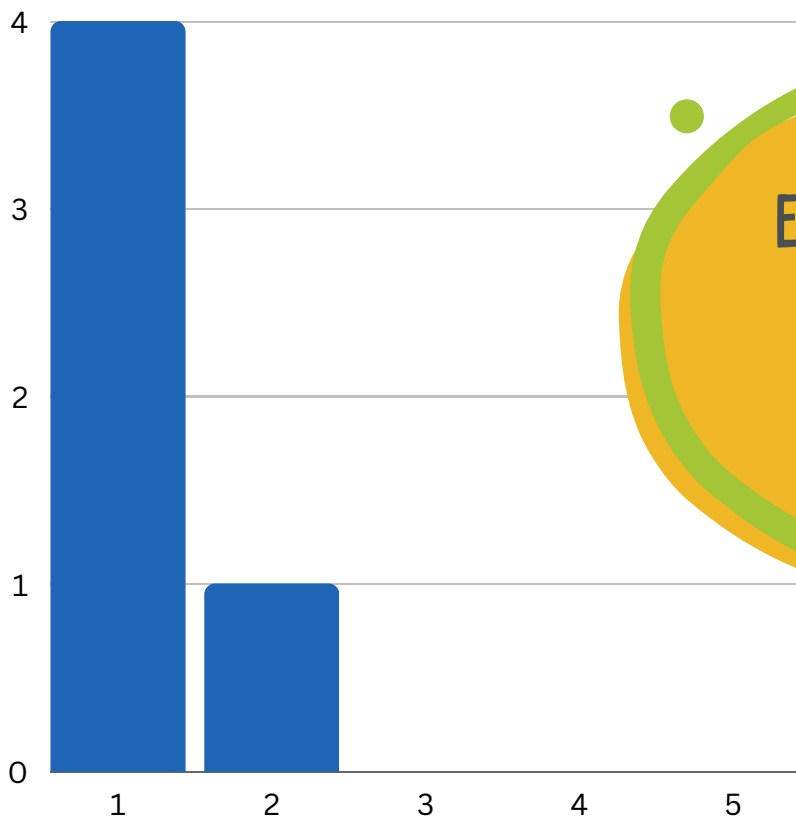


Excellent
100%

I CAN'T EVEN BEGIN TO EXPLAIN HOW INCREDIBLE ALISON'S TALK WAS TO OUR STUDENTS. I HAVE NEVER SEEN STUDENTS AND STAFF SO EQUALLY AFFECTED BY A VISITING SPEAKER

THE STUDENTS REALLY ENGAGED WELL WITH THE SESSION, YOU COULD HEAR A PIN DROP! SEVERAL STUDENTS APPROACHED AT THE END OF THE SESSION TO THANK ALISON

To what extent do you think Alison's session will have a positive impact on your student's ability to keep themselves safe?
(1-5, 1 being most positive impact)



EXCELLENT, RELEVANT
AND USEFUL FOR
STUDENTS

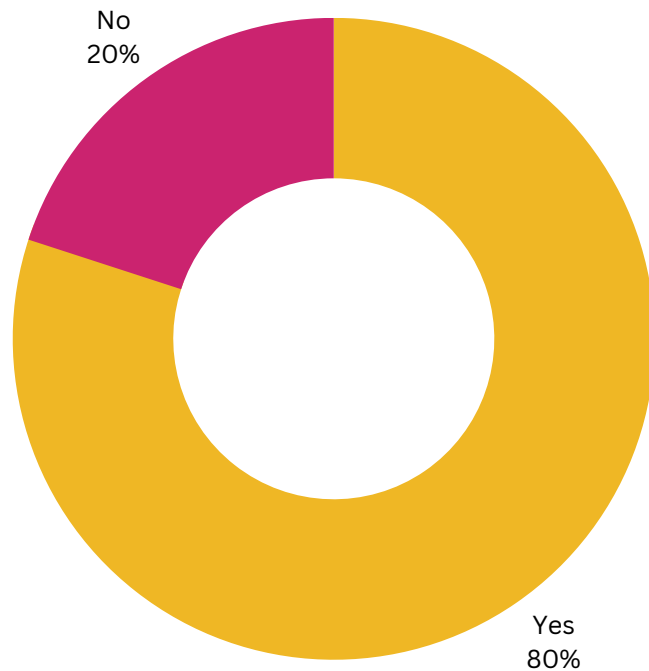
“

ALISON IS AN INCREDIBLY ENGAGING
SPEAKER. FAST PACE OF DELIVERY
KEPT STUDENTS INTERESTED. IT WAS
PITCHED PERFECTLY FOR OUR Y10
STUDENTS.

”

SENSITIVE ISSUE DEALT WITH
CAREFULLY AND POIGNANTLY

Did you deliver the follow-on session from the Pan-Staffordshire PSHE Education Service?



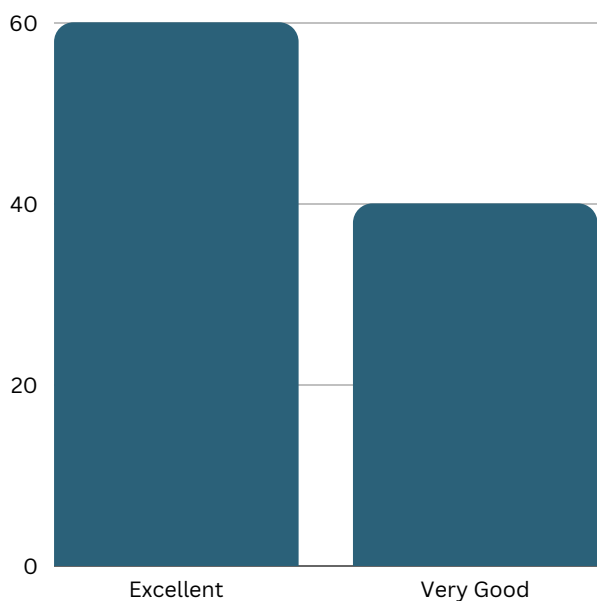
If no, please explain why not:



UNFORTUNATELY THERE WAS NO TIME IN THE PHSE CURRICULUM TO DO THIS, HOWEVER IF WE KNEW FURTHER IN ADVANCE WE COULD. WE ALSO ALREADY COVER KNIFE CRIME WITHIN PHSE.



What did you think of the resources and activities used during the follow-on session?



“
ENABLED STUDENTS TO BE REFLECTIVE FOLLOWING THE PRESENTATION AND FOR STAFF DELIVERING TO UNDERSTAND THE IMPACT THAT THE PRESENTATION HAD ON THE STUDENTS. WAS IMPORTANT TO BE ABLE TO ADAPT THE RESOURCES TO REFLECT OUR OWN SCHOOL SETTING ALSO.
”

RESOURCES LOOK GOOD BUT WE HAVN'T USED THEM.

USEFUL RESOURCES

To what extent do you think the follow-on session will have a positive impact on your student's ability to keep themselves safe? (1-5, 1 being most likely)



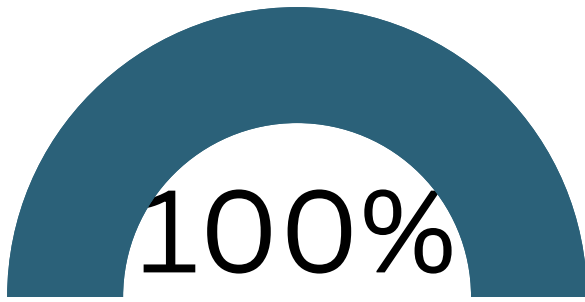
“STUDENTS HAVE REPORTED CONCERNS ABOUT OTHER YOUNG PEOPLE AND WHEN WE HAVE HAD YOUNG PEOPLE WHO ARE AT RISK OF CCE WE HAVE BEEN ABLE TO MAKE REFERENCE TO ALISON'S SESSION.”

STUDENTS CAN CONSIDER THEIR ACTIONS BEFORE MAKING ANY MISTAKES

HOPEFULLY IT WILL DISCOURAGE STUDENTS FROM CARRYING A KNIFE.

IT WILL CERTAINLY MAKE THEM THINK ABOUT THE CONSEQUENCES OF THEIR ACTIONS

Would you recommend this programme to other schools?



"WE WOULD LIKE TO HAVE THIS EVERY YEAR"

“
REALLY IMPACTFUL AND SINCERE
PRESENTATION, IT REACHED ALL OF OUR
STUDENTS OF ALL ABILITIES AND LEVELS
OF RISK
”

"WE WOULD LIKE TO EMBED THIS INTO OUR SCHEME OF WORK EVERY YEAR"

Any other feedback (including from those who did not complete the questionnaire:

STUDENTS CAME AND WANTED TO GIVE ALISON A HUG AND TALK TO HER FOLLOWING THE SESSION. THEY DEMONSTRATED A GREAT DEAL OF EMPATHY.

WE FEEL EVERY STUDENT TOOK SOMETHING AWAY FROM THIS AND STUDENTS HAVE SPOKEN TO ME AFTERWARDS ABOUT HOW INSPIRING SHE WAS. WE FEEL VERY PRIVILEGED OUR STUDENTS WERE ABLE TO EXPERIENCE THIS. ALISON'S STRENGTH AND RESILIENCE EMBODIES OUR SCHOOL VALUES AND HER STORY WAS INSPIRATIONAL TO LISTEN TO..

“
I'D LIKE TO THANK ALISON FOR THE FANTASTIC DAY YOU GAVE US HERE. THE SESSIONS WERE ABSOLUTELY BRILLIANT AND ALL OF THE STAFF AND STUDENTS FOUND THEM VERY VALUABLE. YOUR POSITIVE MESSAGE, WARMTH AND KINDNESS CAN STILL BE FELT IN OUR SCHOOL.
”



PSHE

Education

STOKE-ON-TRENT
STAFFORDSHIRE



Natalie McGrath
PSHE Coordinator
Staffordshire
natalie@staffscvys.org.uk